



Red Squirrel Ecology ID Sheet



Habitats

Conifer Plantation



Mixed Woodland



Broadleaf / Deciduous Woodland



Red or Grey

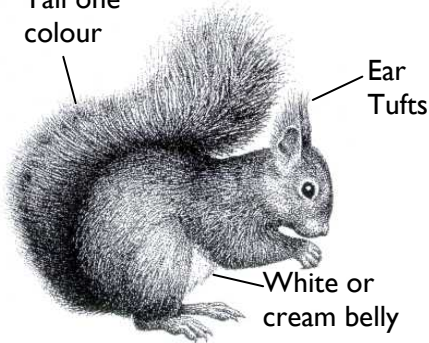
Red Squirrel

Key Feature: Ear tufts on adults.

Coat: Usually reddish-brown with a pale bib. Can be variable, appearing dark (sometimes almost black), or very light due to bleaching by the summer sun when they can appear blonde or greyish.

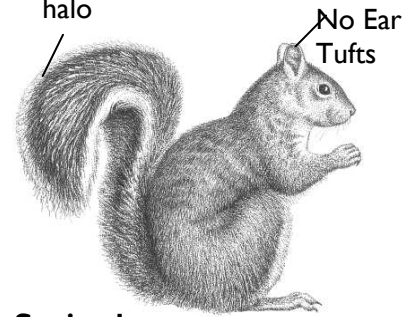
Size: 18 – 22 cm body length. Slender build. Weighs around 275 - 350g

Tail one colour



Behaviour: Spends most of its time in trees. Quite timid, rarely seen far from tree cover.

Tail has white edge, looks like a halo



Grey Squirrel

Key Features: Tail has white edge like a halo. No ear tufts.

Coat: Predominantly grey. Very often tinged orange/red/brown along the body (particularly the back) and on the face.

Size: 25 – 27 cm body length. Stocky build. Weighs around 400 - 600g.

Behaviour: Quite bold and tenacious, frequently seen on the ground as well as in trees. Can be seen a distance from tree cover, on open ground.

Tracks & Dreys



Squirrel track

Drey in a tree



Fallen drey showing inside material





Food and Feeding Sign



Norway Spruce. Whole + eaten



Scots Pine. Whole + eaten



Hazel. Whole and eaten by squirrel



Blacberries



Hawthorn



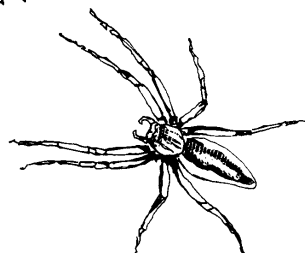
Beech Mast



Fungi & Mushrooms



Invertebrates



Elderberry

